

—
WINTER
2023

EDUCATOR*

GETTING TO KNOW DEAN MONIKA WILLIAMS SHEALEY



p/2

—
DEAN MONIKA
WILLIAMS SHEALEY

p/6

—
ALUMNI
NOTES

 **Temple
University**
College of Education
and Human Development

CO-EDITOR & ASSISTANT DEAN,
DEVELOPMENT & ALUMNI RELATIONS
Kirsten Halker-Kratz

CO-EDITOR, DIRECTOR OF EXTERNAL
COMMUNITY RELATIONS
Dawn Angelique Roberts

CONTRIBUTING WRITERS
Susan Fullam,
Director of Communications,
Institute on Disabilities

Joseph P. DuCette, PhD
Professor of Psychological Studies
in Education

DESIGN
Little Giant Creative

.....
TEMPLE UNIVERSITY COLLEGE OF EDUCATION
AND HUMAN DEVELOPMENT
DEAN & PROFESSOR OF HIGHER EDUCATION
Monika Williams Shealey, PhD

DEPUTY DEAN OF ACADEMIC
AFFAIRS AND GRADUATE FACULTY
PROFESSOR
Julie L. Booth, PhD

ASSOCIATE DEAN FOR TEACHER EDUCATION
AND PROFESSIONAL EXPERIENCES
ASSOCIATE PROFESSOR
Tamara Sniad, PhD

ASSOCIATE DEAN OF ASSESSMENT
AND DATA-INFORMED PLANNING
ASSOCIATE PROFESSOR
Laura L. Pendergast, PhD

VICE DEAN OF WORKFORCE AND
COMMUNITY DEVELOPMENT
Patience Lehrman, EdD

CHAIRMAN, COLLEGE OF EDUCATION AND HUMAN
DEVELOPMENT BOARD OF VISITORS
Joseph S. Vassalluzzo

 **Temple**
University
College of Education
and Human Development

Ritter Hall Annex,
Suite 100 1301 Cecil B. Moore Avenue
Philadelphia, PA 19122

CONTENTS

2

Getting to Know Dean
Monika Williams Shealey, PhD

4

Joseph P. DuCette, PhD /
Rhythm Bath

6

Alumni Notes

7

In Memoriam

8

Feature Photos, Gallery of
Success, 30 Under 30,
2023 Commencement & Retirees

A MESSAGE FROM ASSISTANT DEAN KIRSTEN HALKER-KRATZ



Communication is crucial in so many aspects of our lives. As we emerged from the pandemic, one common issue facing our CEHD family was communication. Whether we like being in person, or enjoy our work-from-home, we all agree that being able to talk to one another has kept us moving forward. To that end, it has been some time since the Educator has been shared both electronically and in print edition. Many new faces have joined us, including me. It has been an honor working with the team on this publication, while learning more about Temple and what makes the CEHD special. Thank you for sharing your stories with us, and we are excited about all of the good work you are accomplishing in the world.

Kirsten Halker-Kratz
Assistant Dean, Development
and Alumni Relations



Temple CEHD Awarded \$1.4 Million Grant to Enhance Teacher Diversity

A MESSAGE FROM DEAN MONIKA WILLIAMS SHEALEY, PhD



Dear CEHD Community,

On July 1, I joined the Temple family as the 11th dean of the CEHD and the first woman to serve in the role. I don't take it lightly that I've been entrusted to lead our college during a time that presents significant challenges and offers great promise. As you can imagine, I've been asked quite a bit what brought me to Temple. The answer is simple. I believe in Temple's mission to provide access to the "acres of diamonds" in our backyard and across the region. Every day we are presented with opportunities to change the trajectory of our students' lives through our scholarship, teaching and service to the college, university, and broader communities. I'd like to invite you to join us as we take on the most vexing issues facing public education, such as the need to diversify the educator workforce, leverage our resources in human development to reimagine schools at the center of the ecology of neighborhoods, and promote and support scholarship that results in equitable life outcomes for those we serve.

I dedicate this issue of Educator to two educators and leaders who embodied the mission of Temple University. Dr. Constance E. Clayton, the first Black superintendent of the School District of Philadelphia and CEHD Board of Visitor member, who passed away on September 18 and President JoAnne A. Epps, Temple's 13th president, who passed away on September 19. The city of Philadelphia and Temple community continues to mourn the loss of these women who understood the power of education and spent their lives serving others. It is my hope that their lessons in advocacy will inspire our college as we continue to promote educational opportunities for all.

Onward and Upward

Monika Williams Shealey, PhD
Dean and Professor

A MESSAGE FROM CHAIR OF ALUMNI BOARD, GERMAINE EDWARDS, PhD



**Building Community, Achieving
Excellence—an Alumni Perspective**

**As a Temple University alum, at
its surface, building community
means staying connected with the
University, the friends made along the way, and the
City of Brotherly Love or other Temple national and
international campus communities.**

Achieving excellence means leveraging the opportunities we've had to accomplish great feats for ourselves. If you dig a little deeper, you'll discover that building community is an integral part of the foundation for achieving excellence. As alumni, we remain part of a strong community, but our role within this community shifts. The Temple University Alumni Association is an intergenerational, international network of excellence with time, talent and treasure to share with the next generation of Owls. Building community means to me that our alumni community spans acres of diamonds. We are now diamonds and our brilliance should be used to help illuminate the path of excellence for others. Achieving excellence means to me paving a road to success for the next generation of "Owlumni" by ensuring that we provide a continual pipeline of access to the vast resources of the Temple alumni community. We exemplify excellence as we share our knowledge of education and human development to make our communities even stronger places to thrive. We never stop learning. We innovate to impact the world far beyond the university walls where we dared to dream. Building community, achieving excellence means we may leave the nest, but we never stop fortifying it for the generations to come.

Germaine Edwards, PhD
Chair, CEHD Alumni Board



I've been energized by the incredible passion and dedication of our faculty, staff and students. But it's important to remember that the strength of any institution also lies in its alumni. Our alumni are a living testament to the impact of our education, and their continued engagement and support are vital to our college's success. Together, we will shape the future of education and empower the next generation of leaders.

Dean Monika Williams Shealey

GETTING TO KNOW DEAN MONIKA WILLIAMS SHEALEY

Monika Williams Shealey, Dean of the College of Education and Human Development, is mission-driven and committed to collaborative community uplifting. She is proud to join the CEHD at Temple University because of the college's mission and commitment to excellence in education within an urban context. Dean Shealey is the first female dean in the history of the College of Education and Human Development and is excited to begin her work in the college and in the community.

"I am thrilled to join the Temple community and work collaboratively with students, faculty, and staff, as well as internal and external partners, in carrying forth the vision and mission of the College of Education and Human Development." Shealey added, "I look forward to leading our efforts in demonstrating our commitment to social justice and community uplift through our curricula and programming, recruitment and retention of faculty and staff, dedication to student success and service to diverse communities."

Social justice in education has been a passion of Shealey's since her undergraduate years. Initially a business major at the University of South Florida, Shealey changed her major in her sophomore year after taking a special education class. She was learning about the landmark Larry P. v. Riles case, when the families of five Black students in California filed suit after their children were segregated and placed in special education classes based on scores from a single IQ test. Shealey recalls being outraged about the treatment of the students in the case and wanting to make a difference for students and within school systems. As a result, Shealey changed her major and decided to be a part of changing the trajectory. She chose to be an advocate to ensure all special education students have access to the general education curriculum.

"The roots of who I am as a leader come from my time as an educator, so I am always educating as dean; even in my previous role as senior vice president, I educated my colleagues in the cabinet and our entire university community around issues of DEL. That is a part of my responsibility as a leader, to always create that kind of climate and culture where we are all learning," Shealey said.

"Creating that culture is important to me, and it drives my leadership style. I am collaborative at every level because it's who I am; that is how I started as a special education teacher," Shealey added.

She has memories of walking in classrooms begging general education teachers to let her in the classroom to help not just the children that she was assigned, but other children without a diagnosis who needed support. That is just a part of how Shealey is as a professional.

She strives for educational excellence for students and defines success broadly. "Student success is the whole student's personal, social, and emotional well-being and ensuring we are attending to the needs of our students and facilitating those connections students make with faculty, staff and administrators," Shealey commented.

"Those kinds of connections will carry students through their entire life. All of us can tell stories of how we connected with people either through undergrad or graduate experience, and we have continued to lean on people as mentors or people in our network, and that is a part of the excellence that we already have in the College of Education and Human Development. I'd like to ensure we sustain that excellence," Shealey added.

Additionally, Shealey is chair of the Board of Directors for the American Association of Colleges for Teacher Education (AACTE). AACTE is the leading voice on educator preparation and represents more than 800 postsecondary education institutions with educator preparation programs.

Shealey has held academic appointments at the University of Wisconsin, Milwaukee; Florida International University in Miami; and the University of Missouri at Kansas City, where she served as associate dean. Shealey joined Rowan University in 2013 as the first African American dean of the College of Education. In 2019, she was tapped by President Ali Houshmand to serve in her most recent (inaugural) position to lead the new Division of Diversity, Equity and Inclusion. The Division was the first of its kind in the region and strives to be a model for systemic change in higher education that results in equitable outcomes for students, faculty and staff.

Shealey received her BA in specific learning disabilities and MA in varying exceptionalities from the University of South Florida. She earned her EdS in reading and learning disabilities from the University of Miami and her PhD in education from the University of Central Florida.

Her research has focused on examining the experiences of minoritized groups in special education and Black women in teacher education and leadership. Specifically, her research interests include examining the intersection of urban and special education, experiences of traditionally marginalized groups in teacher and special education, and culturally responsive practices in special education.

Q&A

with Dean Monika Williams Shealey

Hometown:

Fort Pierce, Florida

Academic & Research Interests:

Urban Education,
Special Education, Leadership

Hobbies:

Reading

Favorite Things to Do:

Listening to Music, Dancing,
Traveling, Festivals

Favorite Food:

All kinds of seafood

Fun Fact:

I was a baton twirler in
elementary and middle school.

Favorite thing about Temple CEHD:

The amazing people I've met

Favorite Place on Campus:

Sullivan Hall &
the Charles Library

Favorite Things about Philly:

Eateries & the performing arts

Who is your biggest inspiration or influence on your life/work:

My teachers and professors

Why the College of Education and Human Development:

I've been a fan of the College of Education and Human Development for a long time because of its emphasis on urban education and deep connection to the city of Philadelphia.

Joseph P. DuCette, PhD

This semester begins my 56th and last year as a full-time faculty member of Temple and the College of Education and Human Development. When I mention how many years I have been at Temple, I am always asked about the reason that has kept me here through all that time. There is, of course, no single reason. Certainly, one of the major reasons is that Temple's mission is so completely consistent with who I am and what I believe. As the first in my family to attend college, I know how transformative a college education can be, and I recognize and applaud that Temple has served this function for generations of students.

Many institutions talk about equity and access; Temple actually fulfills that promise. Perhaps because of that shared mission, I have always found that even during the more difficult times, there has always been a sense in the Temple community that no problem is too difficult and that, somehow, we will find a solution. There is, however, one primary reason that has made me return each fall for 56 years. This reason is the thousands of students I have met and with whom I have interacted. My primary teaching responsibility has been with



graduate students, most of whom have full-time jobs and families. I am consistently moved by the sacrifices that my students make to complete their programs of study. They make those sacrifices because they are dedicated to improving the lives of kids. In closing, I say to all of our students: you are amazing. This is not a goodbye letter, then, but is rather a love letter sent to all of those students who have made the last 56 years a great joy.



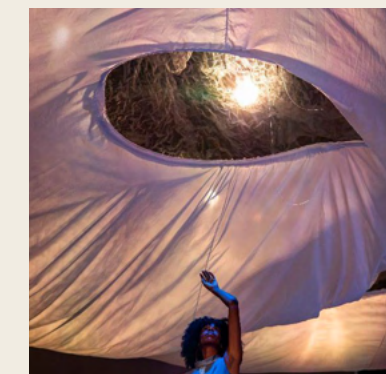
In honor of Dr. DuCette's legacy, please consider a gift to the Dr. Joseph P. DuCette Student Emergency Need Fund by scanning the QR Code to the left or go to giving.temple.edu/givetoedu.

Rhythm Bath

The Institute on Disabilities, a center within the College of Education and Human Development, presented an "immersive and inclusive dance installation" led by renowned choreographer Susan Marshall and Tony award-winning set designer Mimi Lien.

"Rhythm Bath" was the cornerstone event of the Fringe Arts Philadelphia Festival, blending performance, meditation, and wonder, inviting the audience to sense the dance happening around them, inviting them to be a part of the performance.

Developed in collaboration with neurodiverse people and communities, all Rhythm Bath performances during the week of September 17 offered ASL interpretation, audio description and unlimited use of Aira visual interpretation technology for a fully accessible experience.



Rhythm Bath is one of several projects in the Institute's Media Arts and Culture program. Earlier in the year, File/Life - We Remember Stories of Pennhurst was installed for a week in Philadelphia, and several months later in the Senate Rotunda in Washington, DC.

To learn more about the Institute's Media Arts and Culture program, please visit the Institute's website, disabilities.temple.edu.

Support for Rhythm Bath was provided to the Institute on Disabilities by the Pew Center for Arts & Heritage.



ALUMNI NOTES

We would love to hear from you! We welcome the opportunity to celebrate with you. Please submit your news and accomplishments so we can continue to share them with the college community. Submissions may be included in our newsletters and/or on our website, calendar, and social media. **Contact us at alumni.ed@temple.edu.**



Michael Beachem, IV, EDU '12 attended the P6 Management Institute for TRIO directors sponsored by the Department of Education in Washington, D.C.



Rachel Edoho-Eket, EDU '05 recently wrote and published *The Principal's Journey: Navigating the Path to School Leadership*. Her book launch was attended by family, friends, mentors and educational leaders. The book is for anyone preparing for a transition to a higher level of leadership. In it, she provides practical tips, advice for success, and space for readers to write reflections designed to strengthen their personal leadership experiences.



Daniel Hartman, EDU '07, '09 was appointed superintendent of the Conestoga Valley School District. Hartman was previously the assistant superintendent of the Southwestern School District in York County, PA.



J'Mel Johnson, EDU '98 wrote and published *Quotes & Jokes: A Mental Detox for Tweens & Teens*, a guided journal that helps tweens & teens regulate their thoughts, emotions and feelings. She was invited to Good Day Philadelphia, Fox 29 to share how important it is to address the social-emotional health of our youth after serving over four years as the assistant superintendent for the School District of Philadelphia.



Tinasiah Mitchell, EDU '21 self-published her first book of poetry titled *17. A poetry collection*. She teaches secondary English in New Jersey.



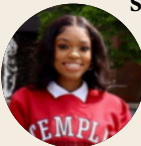
Karen Nell, EDU '98 was appointed superintendent of the Elizabethtown Area School District, PA after serving in leadership positions with the district since April 2021.



Antonio Romero, EDU '10 has spent over 18 years working with Philadelphia youth in various capacities. First as a para-educator while pursuing his bachelor of science in elementary education with a concentration in special education, then as a lead classroom teacher. Most recently, he returned to his alma mater to work in Undergraduate Admissions, where he currently serves as associate director for diversity initiatives and community relations.



Ryan Scallon, EDU '20 was appointed superintendent of the Portland Public Schools, the largest district in Maine.



Sydney Smith, EDU '23 Sydney Smith, EDU '23 is a second-grade teacher at John Moffett Elementary School. She is the first graduate of the Temple Education Scholars program, a program that dual enrolls students from the School District of Philadelphia during their senior year of high school.



Carlton John Steward, EDU '23 completed the Temple Teacher Residency program at the college and is launching a brand-new career as a teacher in an autistic support classroom at Strawberry Mansion High School.



Brittany Wickham, EDU '15 Wickham started her own business creating science education videos targeting mom groups educating their children at home. She works full time as a child activity coordinator for the Children's Hospital of Philadelphia.



Sarah Yoder, EDU '17 was granted a five-year contract to serve as superintendent of Pottsville Area School District, PA following two years of efforts to improve safety, technology and programs.

IN MEMORIAM

This September, our Temple community lost two incredible people.



JoAnne A. Epps
President JoAnne A. Epps was a devoted leader and friend who represented the best parts of Temple. She spent nearly 40 years of her life serving this university, and her loss will reverberate through the community for years to come.



Dr. Constance E. Clayton, EDU '55, '68, '69
Dr. Constance E. Clayton, EDU '55, '68, '69 was a member of the College of Education and Human Development's Board of Visitors and was the first Black and female superintendent of the School District of Philadelphia. Her influence on thousands of young Philadelphia school students, teachers and principals will not be forgotten.

2023 Commencement

The College of Education and Human Development at Temple University was honored to have Adjoa B. Asamoah, '98, '01, as the keynote speaker; Emily Davis '23, as the undergraduate speaker; and Whitney Skippings, '23 as the graduate speaker for this year's Graduation Ceremony at The Liacouras Center.

Asamoah is a lifelong racial equity champion, multiple award-winning social impact strategist, highly sought-after political power player, and history-making policy architect. Asamoah wears multiple hats and debunks the outdated myth—you can't master multiple trades. She conceptualized, developed the legislative and social impact strategies for, and leads the groundbreaking CROWN Act movement, in addition to having spearheaded the legislative victory to codify the nation's first Office on African American Affairs.



Make a Gift Today

Every gift to the College of Education and Human Development is an investment—in the college, in the work that it does, in the work it aspires toward, and in the ability of its students, faculty, staff, alumni, friends and neighbors to transform the world around them. **Your gift is the key.**



The CEHD celebrates Gallery of Success honoree Lynnette K. Mawhinney, and 30 Under 30 recipients, Alexis Mercado and Brandon Matthews.

Meet the CEHD 2022-23 Gallery of Success Honoree and 30 Under 30 Recipients

In the College of Education and Human Development, we are thrilled to celebrate the impressive accomplishments of our alumni. For 25 years, the Gallery of Success has honored select Owls that represent some of Temple University's most esteemed alumni.



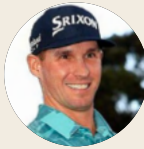
Lynnette K. Mawhinney, EDU '03, '07
Lynnette is a professor and chair of the Department of Urban Education and an affiliated faculty member in the Africana Studies Department at Rutgers University-Newark. Her research focuses on the retention and recruitment of teachers of color, and diversity, equity and inclusion practices in K-12 urban schools.

Stay connected with the [College of Education and Human Development](#)! Be sure to follow us on [LinkedIn](#), [X](#), [Facebook](#), and [Instagram](#) to reconnect with fellow alumni and expand your professional network. For the latest news and updates, visit our [website](#). We look forward to keeping in touch!

The University has more recently begun celebrating the early successes of young alumni that exemplify what it means to be Temple Made. They are the 30 Under 30. This year, CEHD celebrates two honorees.



Alexis Mercado, EDU '17
Alexis is a college career advisor at the Community College of Philadelphia. Her goal is to work to build a better pipeline for under-resourced communities to connect with workforce development resources.



Brandon Matthews, EDU '16
Brandon is a professional golfer who qualified to play the PGA circuit in 2022. He also won eight collegiate tournaments while a Temple student.

CEHD Congratulates Our Retirees!

Best wishes on your new adventures:



Gisele Hamilton
Assistant to the Dean



Joseph DuCette
Professor/Psychological Studies in Education - retiring 12/31/2023



Janice Laurence
Professor/Policy and Organizational Leadership Studies - retiring 12/31/2023



Jayminn Sanford-Deshield
Professor/Teaching and Learning



EDUCATION.TEMPLE.EDU

Meet the New Board of Visitors Members for CEHD



Joe DuCette
Assessment Consultant



Adjoa B. Asamoah
Social Impact Strategist



Karen Pell
Instructional Design Expert

US News & World Report College Rankings

Temple University placed No. 89 in the latest “Best Colleges” U.S. News and World Report ranking of National Universities. This marks the highest ranking ever for the University and the first time Temple has been included in the top 100.

We would love to hear from you! We welcome the opportunity to celebrate with you. Please submit your news and accomplishments so we can continue to share them with the college community. Submissions may be included in our newsletters and/or on our website, calendar and social media.

Do you receive our monthly newsletter? Please email alumni.ed@temple.edu to join the list!

WINTER — 2023

WINTER — 2023

